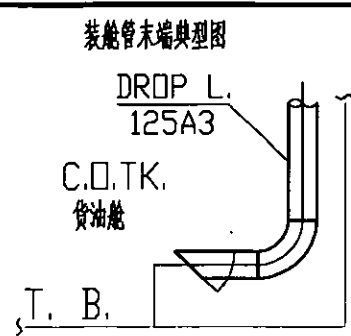


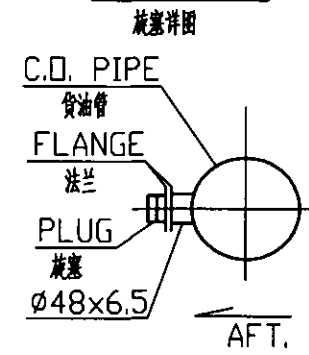
DRAWING SYMBOLS  
图例符号

NO. 序号	SYMBOL 符号	MEANING 名称	NO. 序号	SYMBOL 符号	MEANING 名称	NO. 序号	SYMBOL 符号	MEANING 名称
1		BELLOW EXPANSION JOINT 波纹管膨胀接头	6		COMPOUND & COCK 压力真空表及旋塞	11		H. REMOTE BUTT. VALVE (ON/OFF) 液压遥控蝶阀 (开关)
2		SUCTION MOUTH 吸入口	7		MANOMETER & COCK 压力表及旋塞	12		BUTTERFLY VALVE 蝶阀
3		SUCTION NET BOX 吸入滤网箱	8		PRESSURE TRANSMITTER 压力传感器	13		SCREW DOWN STOP CHECK VALVE 截止止回阀
4		STRAINER 滤器	9		TEMP. TRANSMITTER 温度传感器	14		BALL VALVE 球阀
5		SHORE CONNECTION 通岸接头	10		H. REMOTE BUTT. VALVE (MULTI-POSITION) 液压遥控蝶阀 (开度)	15		SCREW DOWN STOP VALVE 截止阀

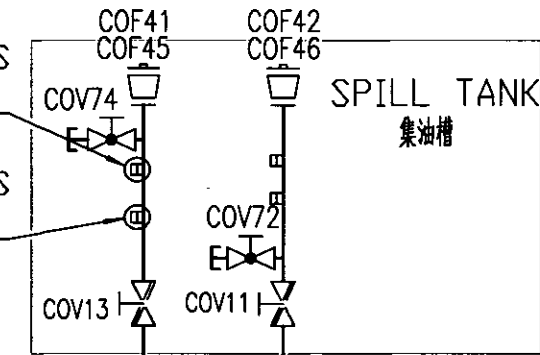
TYPICAL OF DROP L. END  
装舱管末端模型图



PLUG DETAIL  
旋塞详图



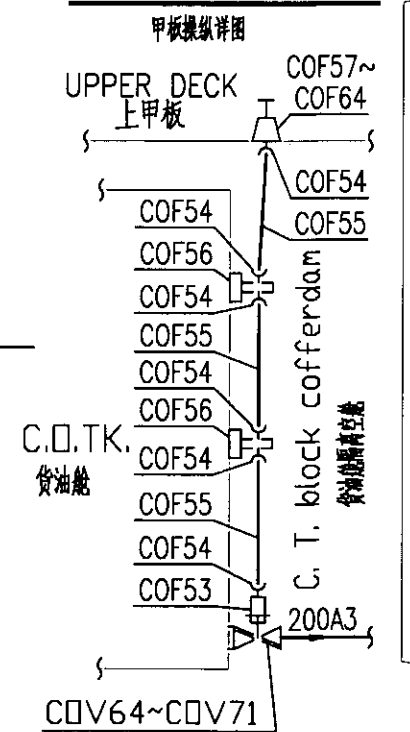
4 SETS WITH PLUGS FOR MANOMETER  
4套为装压力表的旋塞。  
4 SETS WITH PLUGS FOR THERMOMETER  
4套为装温度计用的旋塞。



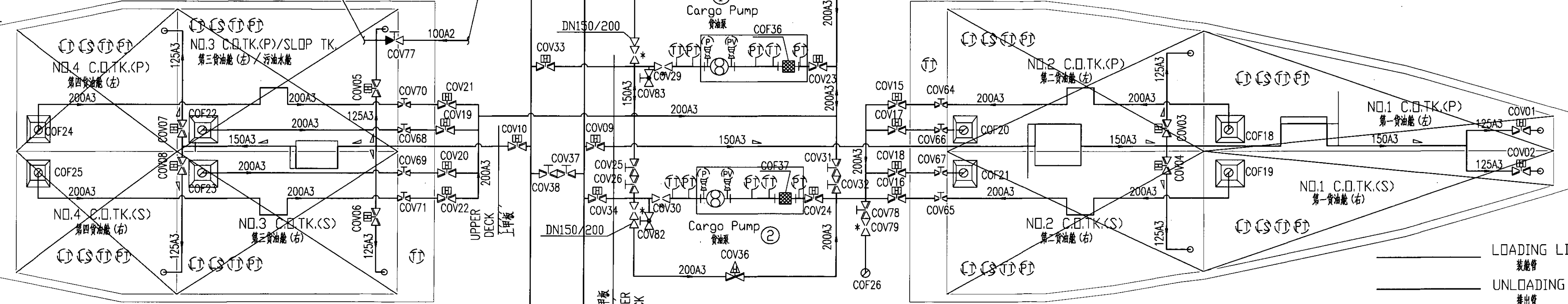
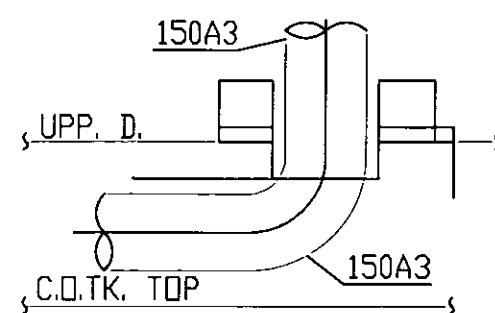
To DDME flowmeter unit  
至普通油监控系统

From spill pump  
接自甲板溢油泵  
From DDME slop return  
接自普通油监控系统回油

DECK CONTROL DETAIL  
甲板操纵详图

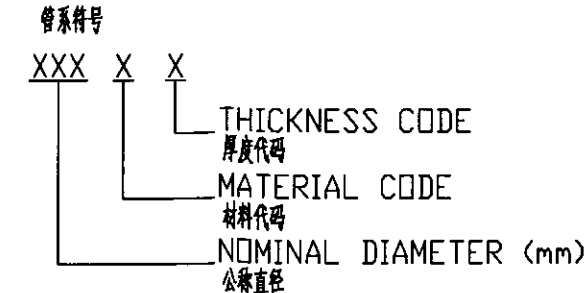


TYPICAL OF C.O. PIPE THROUGH UPP. DECK  
货油管穿上甲板典型图



LOADING LINE  
装舱管  
UNLOADING LINE  
排油管

PIPE SYMBOL  
管系符号



PIPE MATERIAL CODE  
管系材料代码表

CODE 代码	MATERIAL 材料	STANDARD 标准
A	SEAMLESS STEEL 无缝钢管	#20 GB8163-2008

PUMP TABLE  
泵明细表

NO. 序号	NAME 名称	PARAMETER 参数	TYPE 型式	QTY. 数量
①	Cargo Pump 货油泵	0~215m <sup>3</sup> /h, 1.0MPa	hydraulic driven, twin screw pump 液压驱动双螺杆泵	1
②	Cargo Pump 货油泵	0~215m <sup>3</sup> /h, 1.0MPa	hydraulic driven, twin screw pump 液压驱动双螺杆泵	1